



Trusted partner & consultants for

# Software Solutions | Enterprise Solutions AI Innovation | Research Services



[www.zelitesolutions.com](http://www.zelitesolutions.com)



[info@zelitesolutions.com](mailto:info@zelitesolutions.com)



UAE | India | Kenya | USA

# About us

Zelite is a global enterprise solutions and full-service software development company headquartered in Pune, India, with subsidiaries in Kenya, UAE, and USA. With years of experience in providing customized, process-driven software solutions to clients worldwide, Zelite leverages cutting-edge technology to transform business ideas into reality.

## 13+ Years

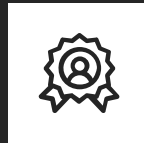
Founded in 2011, HQ in Pune, INDIA

Offices in UAE, Kenya, USA



## 500+

Clients Served Globally



## 350+

Enterprise Solutions Implemented



## 150+

Bespoke Applications Deployed



## 30+

Industries Served



# Empowering Your Business Transformation



# Major Industries



Technology



Government



Agrotech



IoT &  
Automation



Education



Manufacturing



Pharmaceutical



Fintech



Automobile



Healthcare



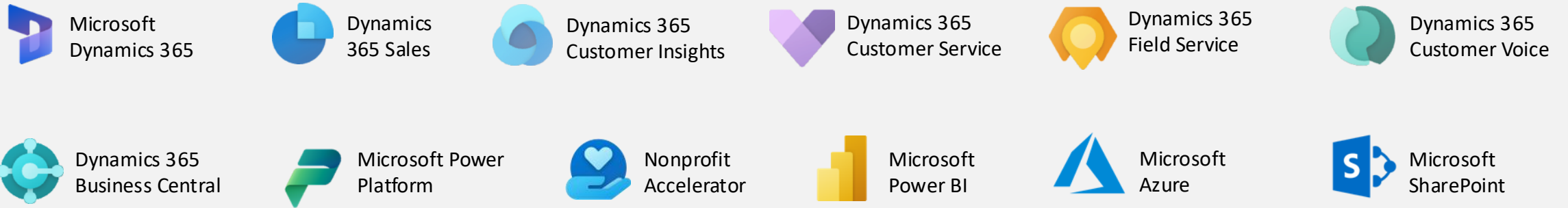
Telecom



Shipping

# Tools and Technologies

## Microsoft Solutions & Platforms



## Major Technologies



# Microsoft SharePoint

We offer comprehensive Microsoft SharePoint services designed to streamline collaboration, enhance productivity, and drive business success. Our expert team leverages the full potential of SharePoint to create tailored solutions that meet your unique business needs.

**Streamline Collaboration. Empower Teams. Boost Productivity.**



**10+**

Of expertise in implementing SharePoint solutions



**120+**

Custom workflows tailored to business needs



**30+**

SharePoint projects completed successfully to date



**15+**

Countries supported with SharePoint solutions for clients

Harness the versatility of SharePoint to create, deploy, and manage collaborative, secure, and scalable solutions for your organization.



# Simplify collaboration and boost productivity with **Microsoft SharePoint**



## **Document Management**

Store, share, and collaborate on documents effortlessly with version control and robust security features.



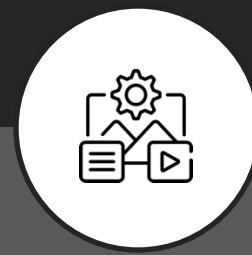
## **Team Sites**

Create dedicated workspaces for projects, departments, or teams, fostering seamless communication and information sharing.



## **Workflow Automation**

Automate repetitive tasks and streamline business processes to free up time and resources.



## **Content Management**

Manage various content types, from images and videos to web forms and announcements, in a centralized location.

# Our SharePoint Services

We specialize in crafting personalized SharePoint solutions tailored to meet the individual requirements and objectives of our clients.

## Strategic Planning & Implementation

- Implementation of Document Management System
- Portal Development
- Cloud or On-Premise

## SharePoint Design & Development

- Information Architecture & Navigation
- Branding & Customization
- Custom Forms & Applications

## SharePoint Migration

- Migration Planning & Assessment
- Content & Data Migration
- Post-Migration Support



## Workflow Automation & Customization

Seamless integrations with other Microsoft solutions like Teams, Power BI, and Dynamics 365 for a unified user experience.

## Security & Governance

Post-Migration Support to ensure a successful transition and user adoption of the new SharePoint environment.

## Ongoing Support

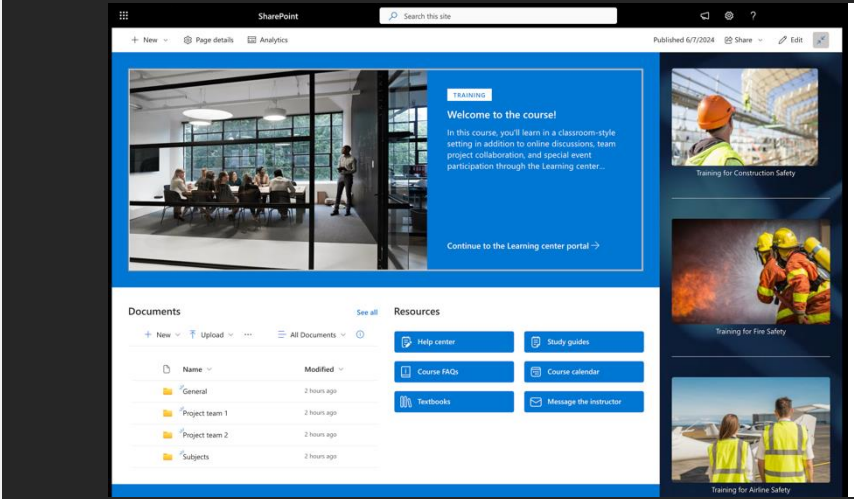
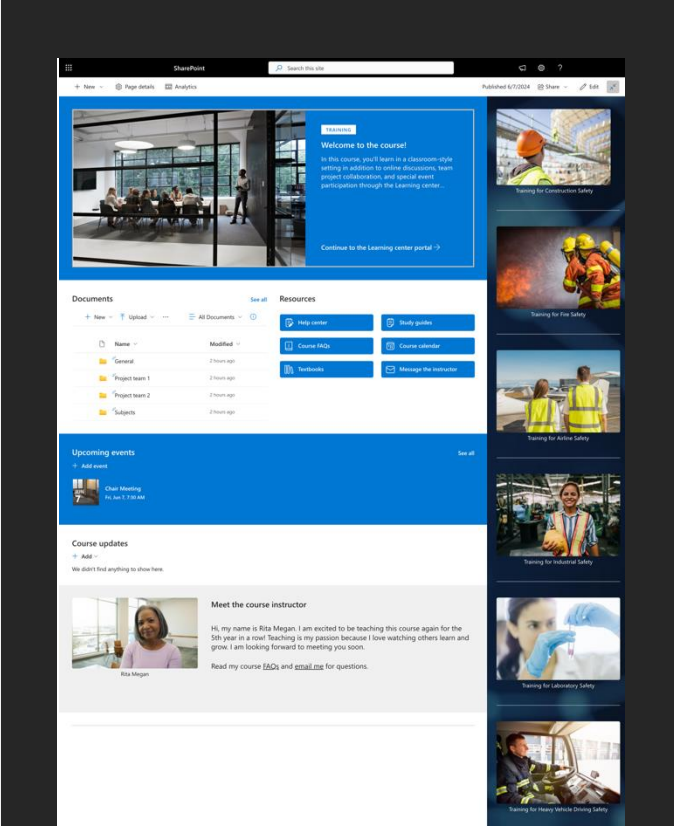
Help Desk Support and ongoing customization and updates to your SharePoint environment.



# SharePoint Streamlines Operations for a Leading Training and Compliance Provider

A leading US-based provider of training and compliance solutions improved document management, team collaboration, and task tracking by implementing a SharePoint Online portal, featuring an organized DMS, streamlined task management, and seamless integration with existing business processes.

- Document Management System (DMS)
- Task Management
- Integration with Existing Business Processes



## Key Components and Integrations

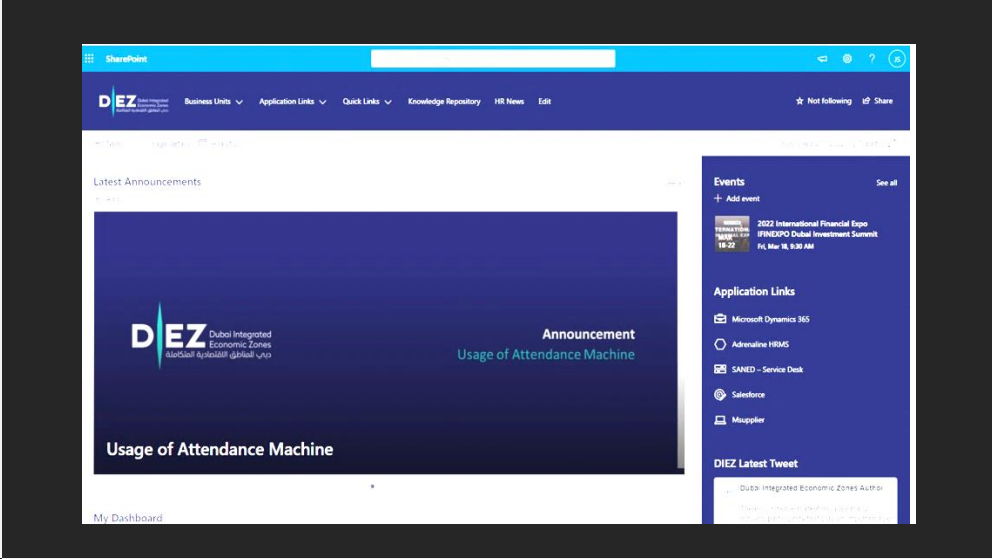
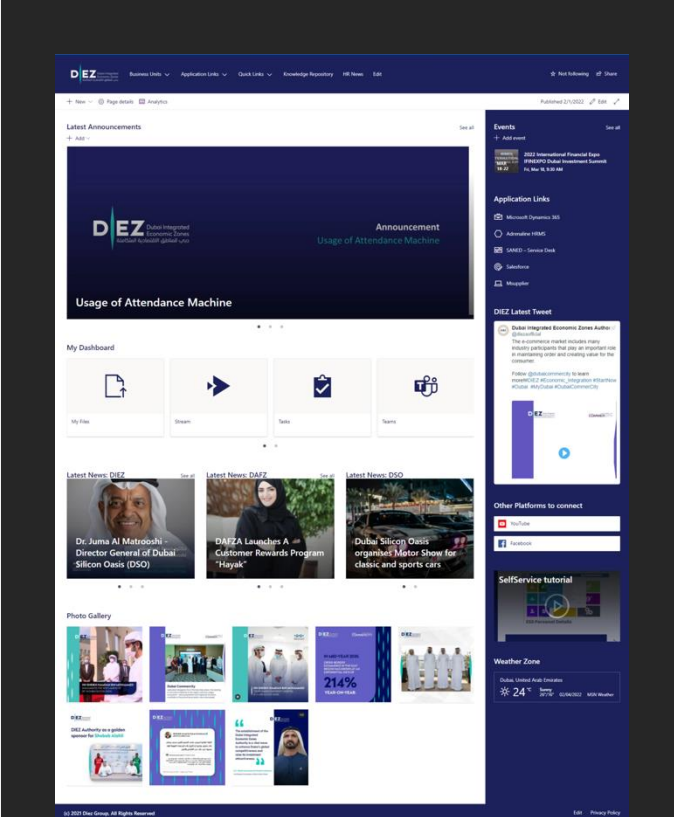
- A custom main dashboard with various dashlets was developed to track document and task status, utilizing JavaScript, HTML, CSS, and .NET plugins for interactive data visualization.
- Advanced search functionalities were implemented, including metadata search and filters based on author, department, content type, document type, and keywords.
- Training sessions were conducted on setting up workflows with notifications to automate document-related processes.
- A granular access control system was configured to protect sensitive documents. Permissions were assigned for creating document folders based on departmental requirements.



# Dubai Airport Freezone Authority Streamlines Operations with SharePoint Online

Dubai Airport Freezone Authority (DAFZA) sought to enhance document management, streamline business processes, and increase transparency across departments. Their existing system lacked automation and a user-friendly interface, hindering efficiency and collaboration.

- Document Management System (DMS)
- Correspondence Management System (CMS)
- Multilingual Support
- Business Process Automation



## Key Components and Integrations

- Custom dashboards were developed to track document status, task progress, and key performance indicators (KPIs) across departments.
- Advanced search functionalities were implemented, including metadata search and filters based on document type, author, department, and keywords.
- A granular access control system was configured to ensure data security
- Existing customer and product data from DAFZA's CRM system was migrated to the new SharePoint environment.
- Custom forms were developed using PowerApps for various purposes.

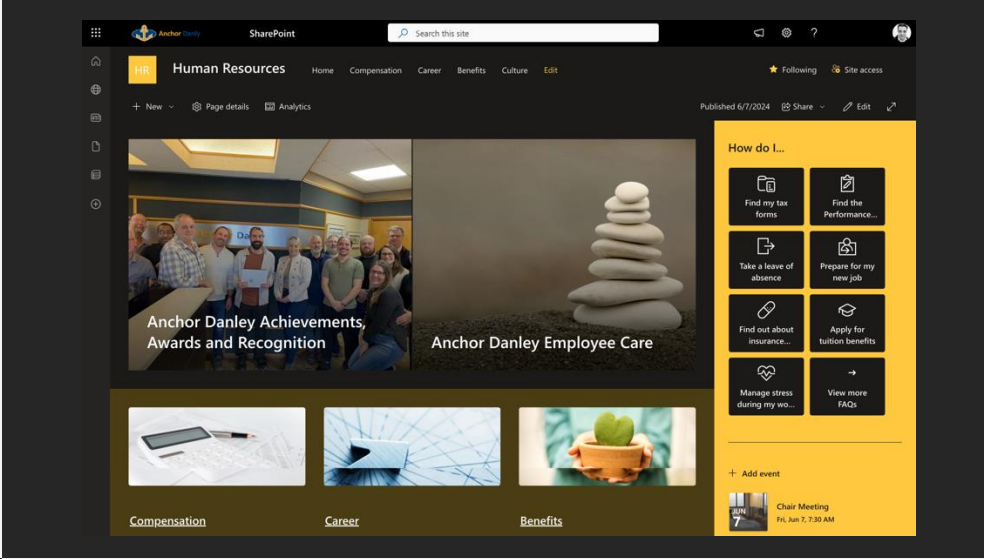
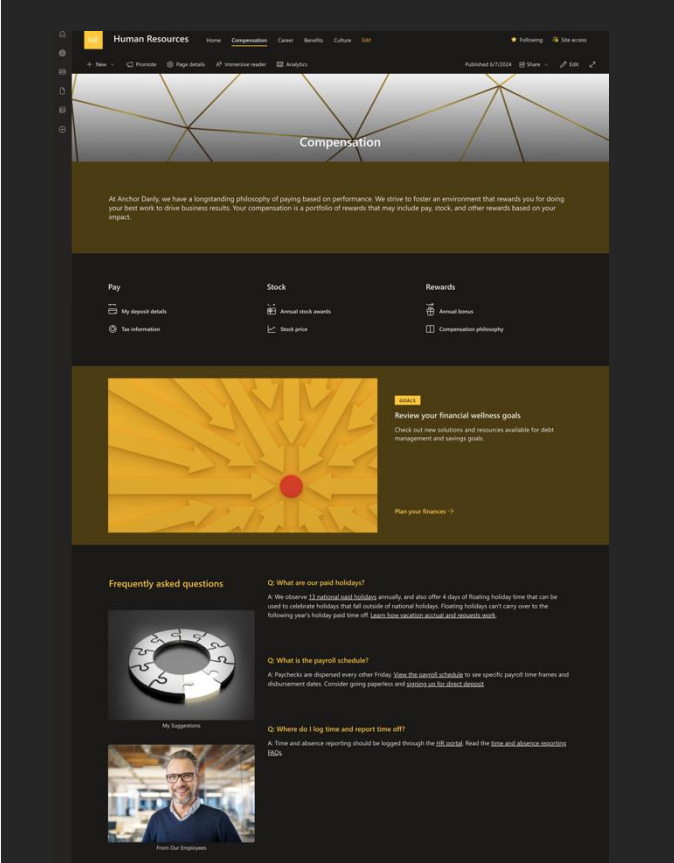


## Case Study - 3

# Streamlining Anchor Danley's HR Operations with SharePoint Online

Anchor Danley improved HR efficiency by partnering with Zelite Solutions to implement a comprehensive SharePoint Online solution, centralizing HR data, enhancing collaboration, automating workflows, structuring the recruitment process, and providing real-time reporting for valuable insights.

- **Centralized Platform & Collaboration Tools**
- **Automated Workflows**
- **Structured Recruitment Process**
- **Real-Time Reporting**



## Customized SharePoint Online solution

- A centralized platform for HR data and documents, enhancing accessibility and eliminating data silos.
- Collaboration tools to streamline communication and knowledge sharing among HR staff.
- Automated workflows for tasks like recruitment and travel expense management, reducing errors and processing time.
- Structured recruitment processes and real-time reporting for better candidate management and data-driven decision-making.

# Our Global Clients



# Thank you!



## Addresses

### **Headquarter (INDIA) : Zelite Solutions Pvt. Ltd.**

302, Marisoft Tech Park – III, Kalyani Nagar, Pune, MH,  
411014, INDIA Ph : +91 99585 22499

### **Reg. Office (UAE) : Zelite Solutions LLC.**

Sharjah Media City (SHAMS), Sharjah, UAE,  
Ph : +971 800 018 2463 (toll free)

### **Reg. Office (Kenya) : Zelite - 3C Business Corporation Ltd.**

AEA Plaza, Valley Road, Nairobi, Kenya.  
Ph : +254 789 479270

### **Reg. Office (USA) : Zelite Solutions**

221 College Park DR Suite 116, DOVER, Kent, DE, 19904  
Ph: +1 732 543 6600

